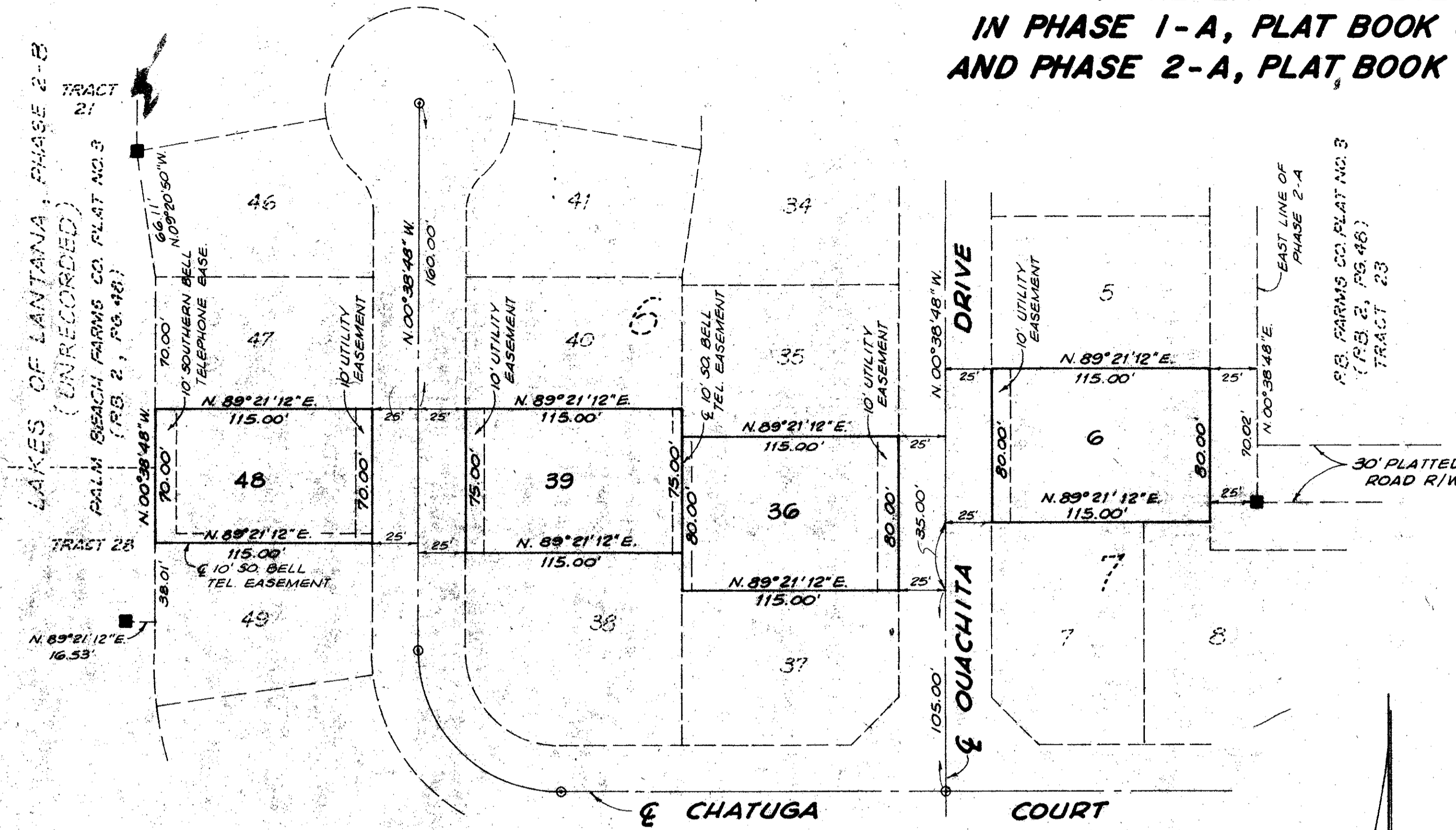


A P.U.D. LAKES OF LANTANA

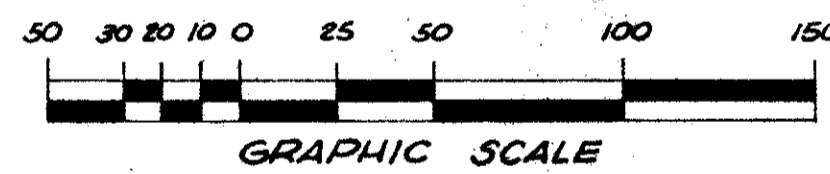
A REPLAT OF RESERVED LOTS
IN PHASE 1-A, PLAT BOOK 34, PAGES 93-94
AND PHASE 2-A, PLAT BOOK 35, PAGES 121-126

90



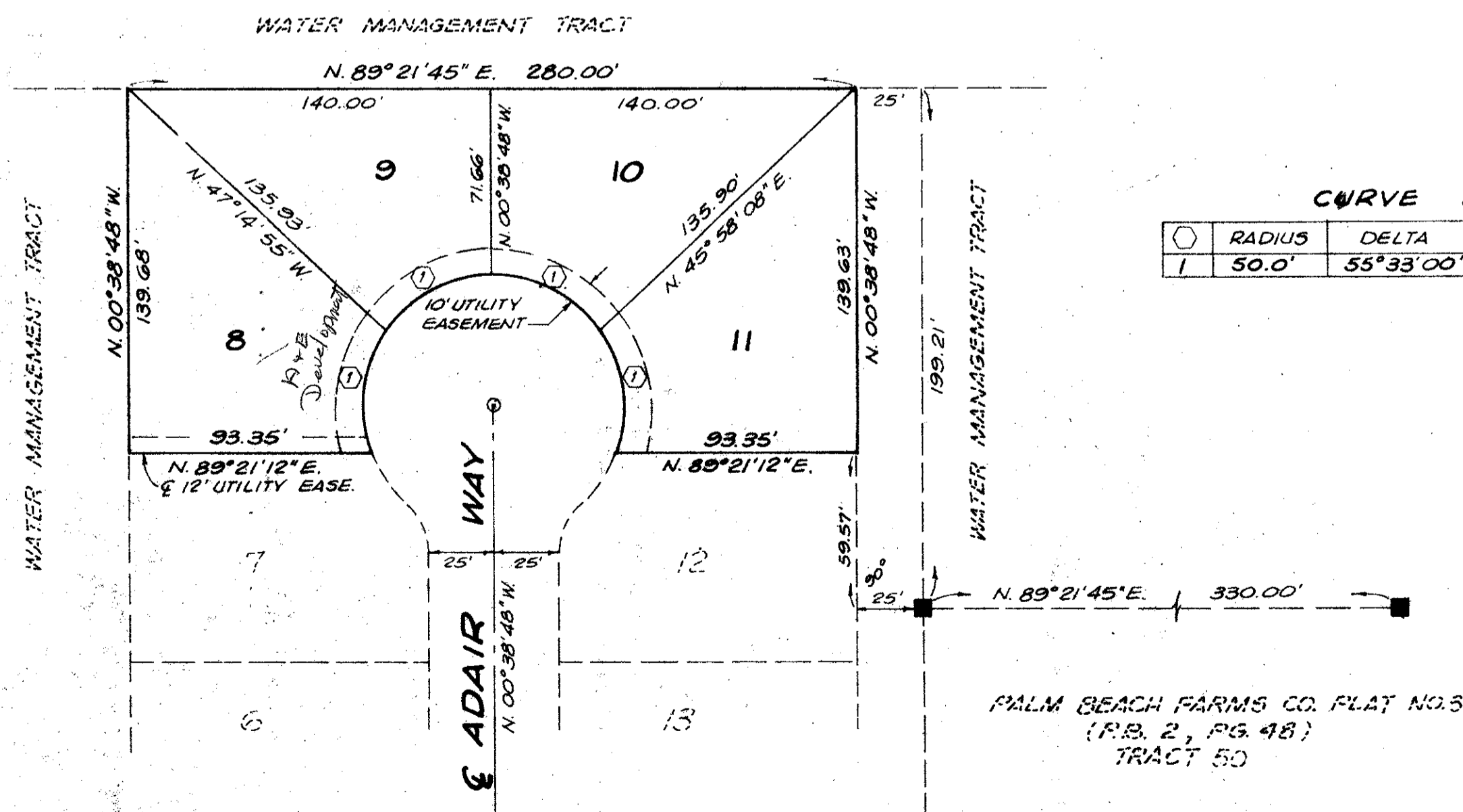
RESERVED LOTS IN PHASE 2-A

SEE → PLAT BOOK 35, PAGES 121-126



LEGEND

- EXISTING P.R.M.
- EXISTING P.C.P.

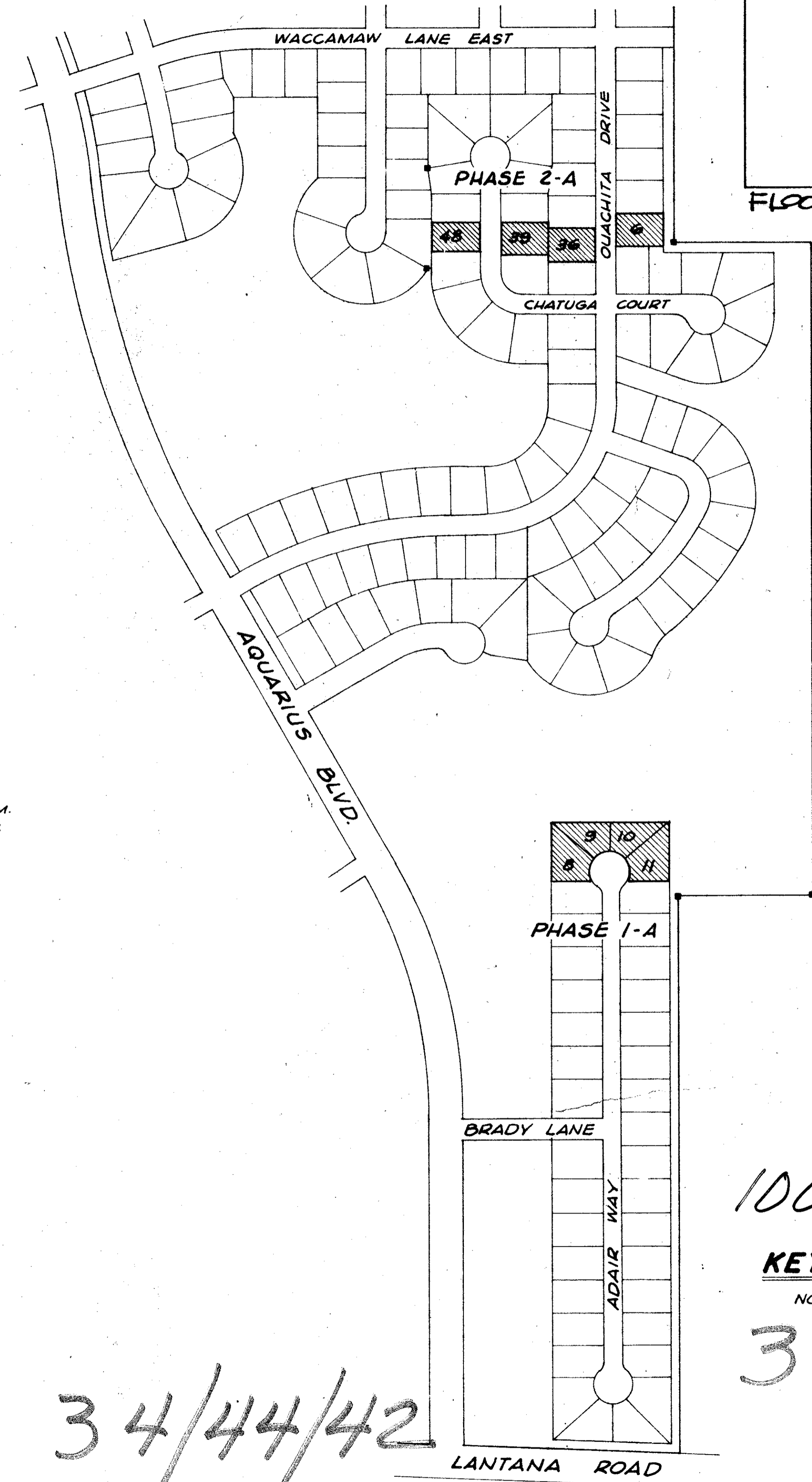


RESERVED LOTS IN PHASE 1-A

→ PLAT BOOK 34, PAGES 93-94

CURVE DATA

RADIUS	DELTA	ARC	TANGENT
50.0'	55°33'00"	48.48'	26.33'



1000-087

KEY MAP
NOT TO SCALE

37/90

33

34/44/42

NOTE:
ALL PALM BEACH FARMS COMPANY PLATTED
ROAD RIGHT-OF-WAYS HAVE BEEN ABANDONED
IN O.R.B. 3012, PAGES 285, 286, AND 287,
IN THE RECORDS OF PALM BEACH COUNTY, FLORIDA.

ADAIR & BRADY, INC. CONSULTING ENGINEERS & LAND SURVEYORS LAKE WORTH WEST PALM BEACH ORLANDO		
DRAWN BY WILSON	SCALE AS SHOWN	SHEET 2 OF 2
CHECKED BY JLK	DATE 2 / 79	PROJECT NO. FP1055
DESIGNED BY JWB	DRAWN BY 6 - 3595 F	SHEET 2 OF 2

Lakes of Lantana PUD